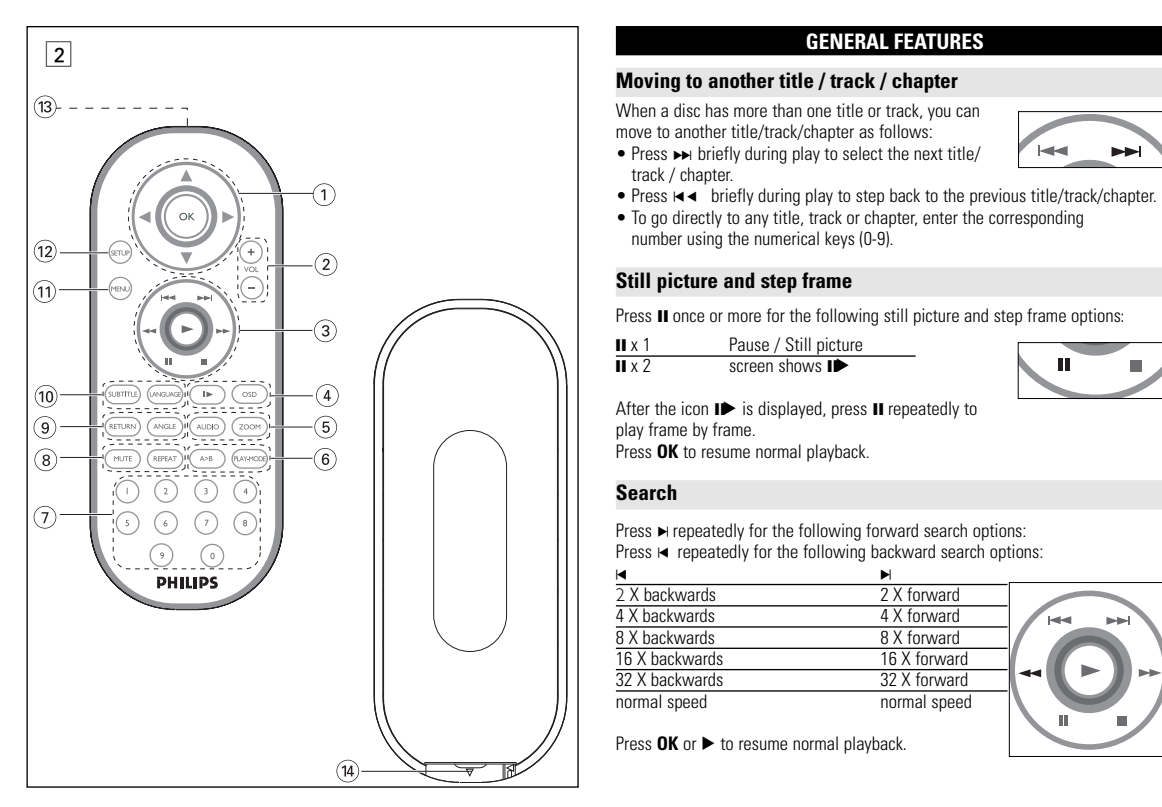
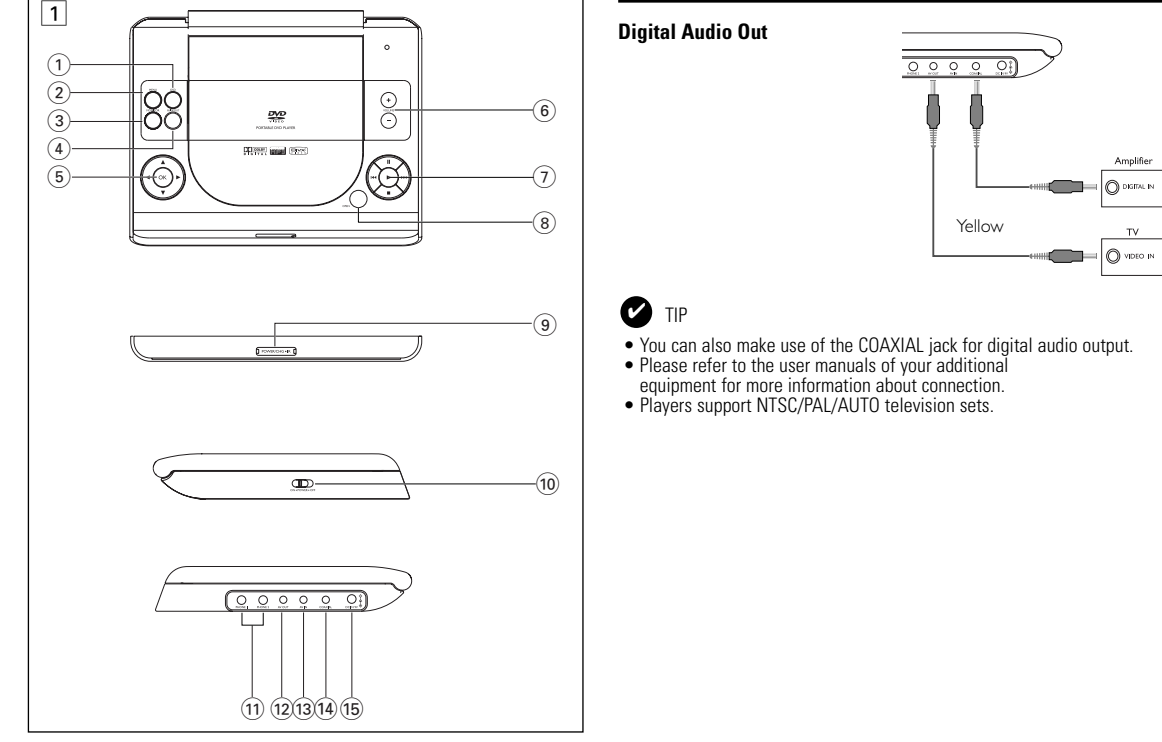


CLASS 1 LASER PRODUCT
Be responsible Respect copyrights

Specifications are subject to change without notice.
© 2005 Koninklijke Philips Electronics N.V. All rights reserved.

Printed in China



Important notes for users in the UK
Main plug
Remove fuse cover and proceed.
How to connect a plug

Copyright in the UK
The design and playback of material may require consent.

English FUNCTIONAL OVERVIEW
Main unit controls (see figure 1)
POWER/CHG. IR
MENU
MONITOR
ON, POWER, OFF
PHONE 1 & 2
AV IN / OUT
AV IN
COAXIAL
DC IN 9V
VOLUME +/-
MUTE
REPEAT
RETURN
ANGLE
SUBTITLE LANGUAGE
SETUP
Info Red opt
BATTERY COMPARTMENT

GENERAL INFORMATION
Power Sources
This unit operates on a supplied AC adaptor, car adaptor, or a rechargeable battery pack.
Safety and maintenance
Do not disassemble the unit for at least 90 days are dangerous to you.

PREPARATIONS
Digital Audio Out
TIP
Menu navigation
Loading discs and switching on

GENERAL FEATURES
Moving to another title/track/chapter
Still picture and step frame
Search
Repeat
ZOOM
MUTE
REPEAT
ZOOM
MUTE
REPEAT

SETUP OPERATIONS
To maximize your playback experience, use SETUP to fine tune your settings.
Audio Setup
Preferences
General Setup
Troubleshooting
Symptom Remedy

FUNCTIONAL OVERVIEW
Remote controls (see figure 2)
Your portable DVD player
Video CD
DVD-Video
Unpacking
Placement
Attaching and charging the battery pack\*
Connections
Connecting headphones
Turn off your additional equipment
AV OUT
AV IN

GENERAL INFORMATION
Power supply
Using the AC / DC Adaptor
Using the car adaptor
Powering your remote control
CAUTION
Switching on for OSD language setup
Playing a DVD disc
Playing an audio or video CD disc
Playing DVD-X disc
Loading discs and switching on

BASIC FUNCTIONS
Switching on for OSD language setup
Playing a DVD disc
Playing an audio or video CD disc
Playing DVD-X disc
Loading discs and switching on

SPECIAL DVD FEATURES
Repeat A > B
Play modes
Camera angle
OSD OPERATIONS
In addition to using remote control keys, you can also change disc playback options.

TECHNICAL DATA
Dimensions
Weight
Power supply
Operating temperature range
User wavelength
Video system
Frequency response
Signal/noise ratio
Harmonical separation
Dynamic range
Output
Load impedance
Video Output level
Load impedance

INTRODUCTION
Your portable DVD player
Video CD
DVD-Video
Unpacking
Placement
Attaching and charging the battery pack\*
Connections
Connecting headphones
Turn off your additional equipment
AV OUT
AV IN

GENERAL INFORMATION
Power supply
Using the AC / DC Adaptor
Using the car adaptor
Powering your remote control
CAUTION
Switching on for OSD language setup
Playing a DVD disc
Playing an audio or video CD disc
Playing DVD-X disc
Loading discs and switching on

BASIC FUNCTIONS
Switching on for OSD language setup
Playing a DVD disc
Playing an audio or video CD disc
Playing DVD-X disc
Loading discs and switching on

SPECIAL DVD FEATURES
Repeat A > B
Play modes
Camera angle
OSD OPERATIONS
In addition to using remote control keys, you can also change disc playback options.

TECHNICAL DATA
Dimensions
Weight
Power supply
Operating temperature range
User wavelength
Video system
Frequency response
Signal/noise ratio
Harmonical separation
Dynamic range
Output
Load impedance
Video Output level
Load impedance

APERÇU DES FONCTIONS
Commandes de l'unité principale (voir figure 1)
OSD
MENU
MONITOR
ON, POWER, OFF
PHONE 1 & 2
AV IN / OUT
AV IN
COAXIAL
DC IN 9V
VOLUME +/-
MUTE
REPEAT
RETURN
ANGLE
SUBTITLE LANGUAGE
SETUP
Info Red opt
BATTERY COMPARTMENT

GENERAL INFORMATION
Power Sources
This unit operates on a supplied AC adaptor, car adaptor, or a rechargeable battery pack.
Safety and maintenance
Do not disassemble the unit for at least 90 days are dangerous to you.

PREPARATIONS
Digital Audio Out
TIP
Menu navigation
Loading discs and switching on

GENERAL FEATURES
Moving to another title/track/chapter
Still picture and step frame
Search
Repeat
ZOOM
MUTE
REPEAT
ZOOM
MUTE
REPEAT

SETUP OPERATIONS
To maximize your playback experience, use SETUP to fine tune your settings.
Audio Setup
Preferences
General Setup
Troubleshooting
Symptom Remedy

INTRODUCTION
Votre lecteur de DVD portable
OSD
MENU
MONITOR
ON, POWER, OFF
PHONE 1 & 2
AV IN / OUT
AV IN
COAXIAL
DC IN 9V
VOLUME +/-
MUTE
REPEAT
RETURN
ANGLE
SUBTITLE LANGUAGE
SETUP
Info Red opt
BATTERY COMPARTMENT

GENERAL INFORMATION
Power Sources
This unit operates on a supplied AC adaptor, car adaptor, or a rechargeable battery pack.
Safety and maintenance
Do not disassemble the unit for at least 90 days are dangerous to you.

PREPARATIONS
Digital Audio Out
TIP
Menu navigation
Loading discs and switching on

GENERAL FEATURES
Moving to another title/track/chapter
Still picture and step frame
Search
Repeat
ZOOM
MUTE
REPEAT
ZOOM
MUTE
REPEAT

OPERATIONS SETUP (CONFIGURATION)
Régler les paramètres
Préférences
Définition mot de passe
Régler les paramètres
Préférences
Définition mot de passe



